

**Bahar  
Bakar**

**Ibrahim  
Biçimli**

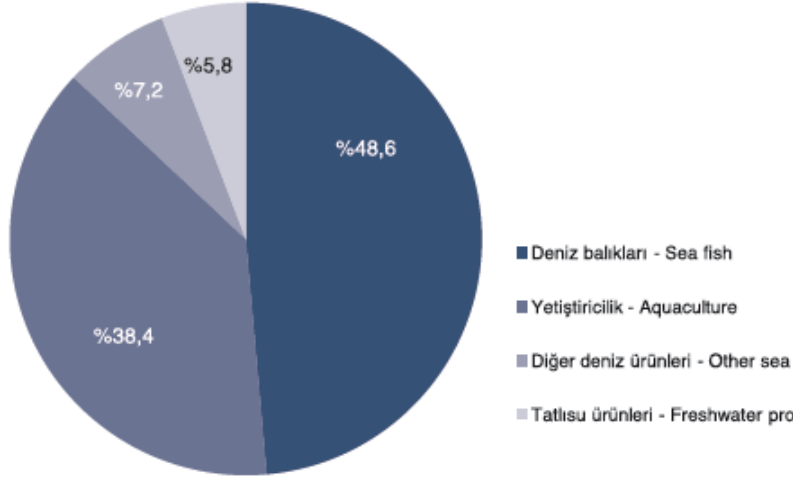


**AQUACULTURE  
IN TURKEY**



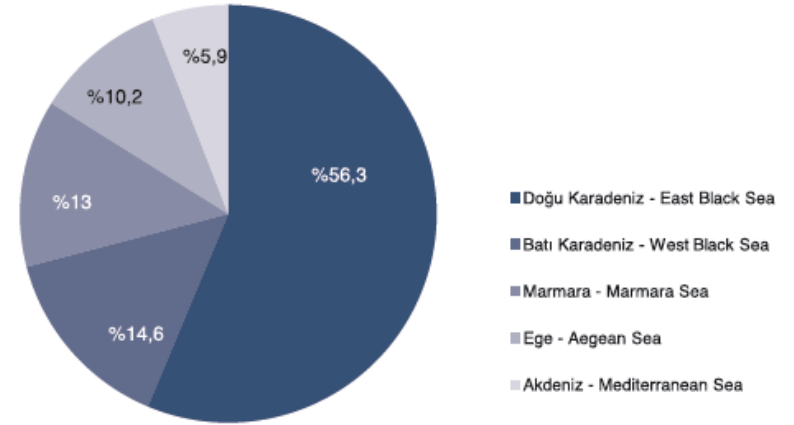
- Population : 81.619.392
- Area : 783.562 km<sup>2</sup>
- Coast line: 8,333 km
- Economic coastal zone: 151,080 km<sup>2</sup>
- Total river length: 177,714 km
- Natural lakes: 900,000 ha
- Dam reservoirs: 500,000 ha
- Potential Area for Aquaculture: 24,607,200 ha

**2.1 Su ürünleri üretim dağılımı, 2013**  
Distribution of fishery products, 2013



Veri için tablo 2.1, 2.2, 2.3 ve 2.4'e bakınız  
For data, see table 2.1, 2.2, 2.3 ve 2.4

**2.2 Deniz ürünleri bölgelerine göre avlanan deniz balıkları, 2013**  
Capture of sea fish by sea products regions, 2013

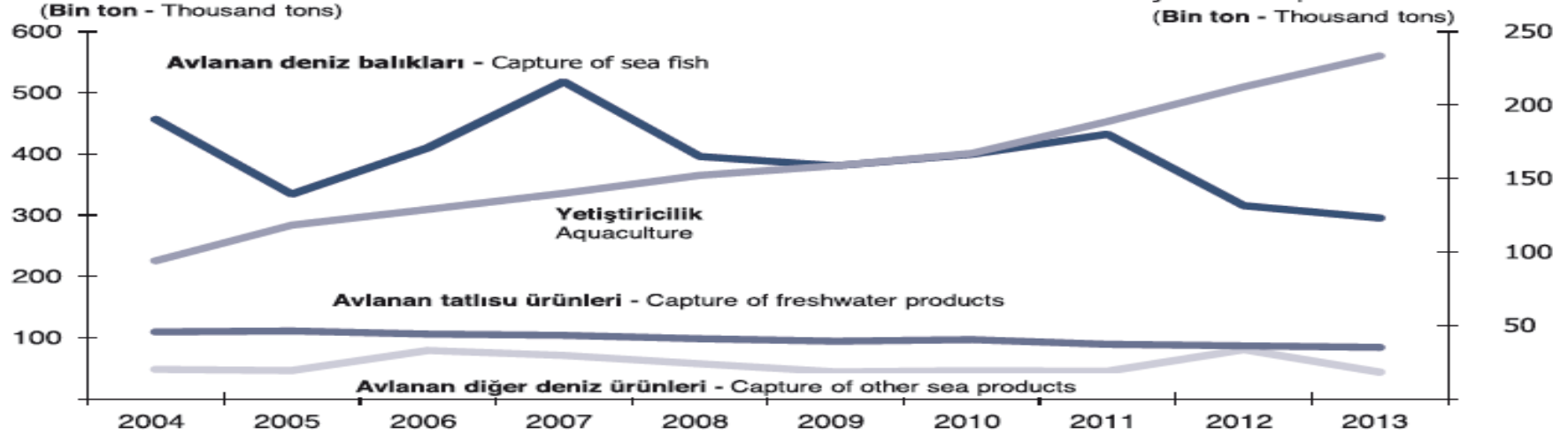


## 1.1 Su ürünleri üretimi, 2004-2013

Production of fishery products, 2004-2013

**Avlanan deniz balıkları ve diğer deniz ürünleri**  
Capture of sea fish and other sea products

**Avlanan tatlısu ürünleri - Yetiştiricilik**  
Capture of freshwater products - Aquaculture



## 1.2 Denizlerde ve iç sulardaki yetiştiricilik üretiminin dağılımı, 2004-2013

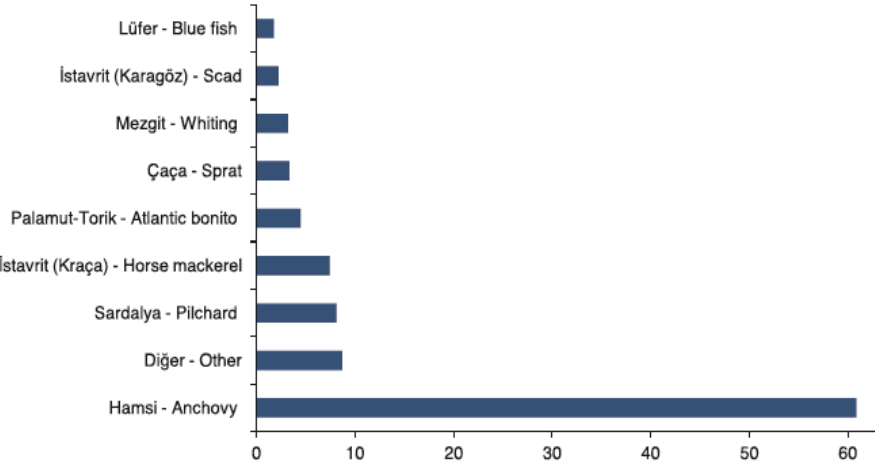
Distribution of aquaculture production in marine and inland water, 2004-2013



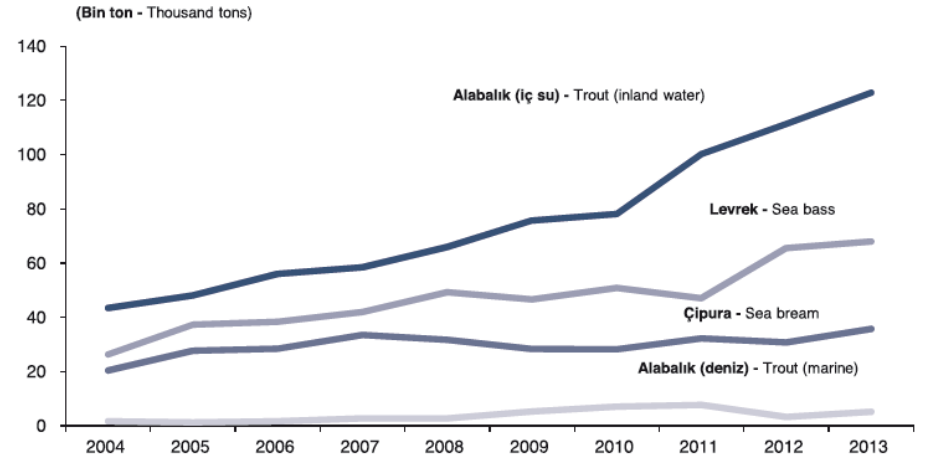
2013 verisi için Tablo 2.4'e bkz.

See table 2.4 for data on 2013.

**2.3 Deniz balıklarının türlerine göre dağılımı, 2013**  
Distribution of sea fish by types, 2013



**1.5 Seçilmiş su ürünlerinin yetiştiricilik üretim dağılımı, 2004-2013**  
Distribution of aquaculture production of selected fishery products, 2004-2013

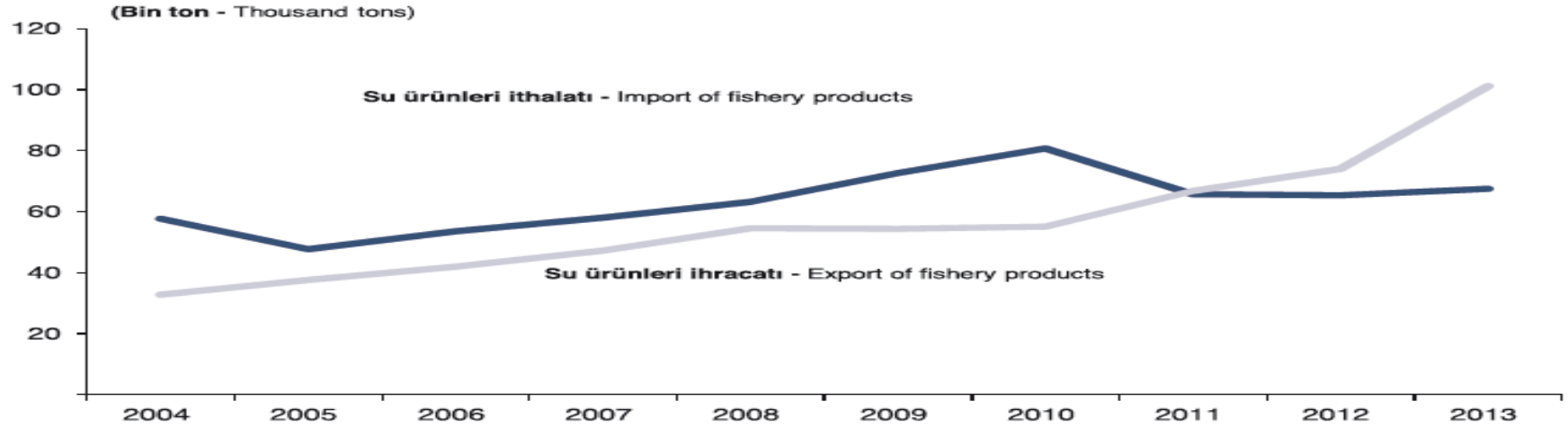


2013 verisi için Tablo 2.4'e bkz.  
See table 2.4 for data on 2013.



## 1.8 Su ürünleri ithalatı ve ihracatı, 2004-2013

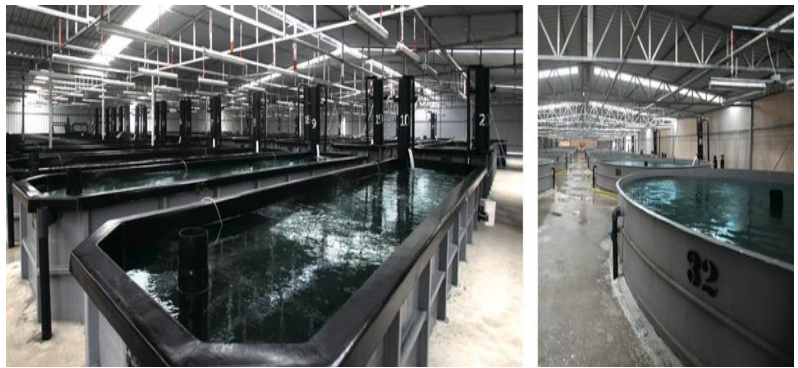
### Import and export of fishery products, 2004-2013



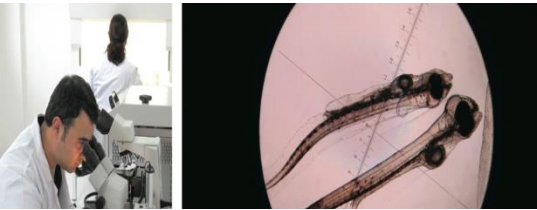
## EUROPE SEAFOOD CONSUMPTION PER CAPITA



- Turkey Aquaculture hatcheries are equipped with advanced technologies.
- Eggs supplied from wild catch brood with natural techniques and they are took photo all year long. genetic selection of species are practiced.



- Taste of Turkish products have good quality and global acceptance
- The special feeds used in Turkish Aquaculture sector are being produced by extruder technologies.
- The key components of fish feed are fishmeal, fish oil, vegetable proteins, cereal grains, vitamins and minerals.



- Phsical, chemical, microbiological and organoleptic parameters are being checked continuously





### ► Marine

17 marine hatcheries with a total production capacity of 348 million fry per year using recirculation technology .  
Mostly hatchery products are Sea bass and Sea bream.

### ► Inland

Freshwater fish farms rely on their own fry production.  
Governmental hatcheries support in inland water for stock enhancement (mostly carp sp.)





Real Dentex



Pink Dentex



Blue Spotted Seabream

# Some fish species



Mediterranean Sea Bass



Mediterranean Sea Bream



Rainbow Trout



Bluefin Tuna



Royal Seabass



Blacksea Anchovy

# Some Sea Product



Blue Crab



Topshell



Frog Leg



Shrimp



Sepia



Black Mussel

# References



<http://www.turkishseafood.org.tr/>

<http://www.tuik.gov.tr/>

<http://www.kilicdeniz.com.tr/tesislerimiz/balik->

<http://www.suurunleri.org.tr/ciftlikleri>

<http://www.eurofish.dk/>





